An aerial photograph of a coastal town and a villa development, viewed through a window frame. The town features white buildings with red-tiled roofs, surrounded by lush greenery. In the foreground, several modern villas with grey roofs are visible. The background shows a blue sea and distant hills. The window frame is grey and has two open shutters on either side.

Aegean  
window  
villas  
Akbuk

The image shows a panoramic view of a coastal town and bay, framed by an open window. The window has a dark wooden frame and two open shutters with metal handles. The view outside is a high-angle shot of a town built on a hillside, overlooking a large, turquoise bay. In the background, there are rolling hills and mountains under a clear blue sky. The text 'Aegean window villas Akbuk' is overlaid on the upper part of the image.

Aegean  
window  
villas  
Akbuk



11 Eşsiz Ünite

---

*11 Unique units*

*in Akbük*



Aegean  
window  
villas





Aegean  
window  
villas



Aegean  
window  
villas





Aegean  
window  
villas





Aegean  
window  
villas





Aegean  
window  
villas







Aegean  
window  
villas



Aegean  
window  
villas





Aegean  
window  
villas



Aegean  
window  
villas





Aegean  
window  
villas



Aegean  
window  
villas





11 Eşsiz Ünite 11 Farklı Hayal

*11 Unique Units 11 Different Dream*



11 Eşsiz Ünite 11 Farklı Manzara

*11 Unique Units 11 Different Views*









Aegean  
window  
villas







Aegean  
window  
villas



İç GörSELLER / *Interior Visuals*

























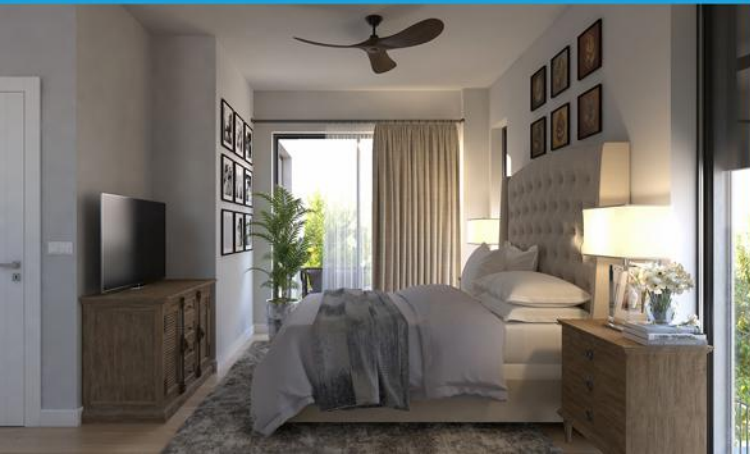






11 Eşsiz Ünite 11 Farklı Yaşam Stili

*11 Unique Units 11 Different Life Styles*















Planlar / *Planlar*





BRÜT KAT ALANI : 74.50 m<sup>2</sup>

MAHAL m<sup>2</sup>

1- DİNLENME ALANI	16.75 m <sup>2</sup>
2- SPOR SALONU	14.90 m <sup>2</sup>
3- BANYO	4.60 m <sup>2</sup>
4- ŞOK-DUŞ	4.05 m <sup>2</sup>
5- SAUNA	11.15 m <sup>2</sup>

TOPLAM NET : 51.45 m<sup>2</sup>

**BODRUM KAT PLANI**



BRÜT KAT ALANI : 74.50 m<sup>2</sup>

MAHAL m<sup>2</sup>

1- SALON	31.50 m <sup>2</sup>
2- HOL	6.85 m <sup>2</sup>
3- MERDİVEN	6.85 m <sup>2</sup>
4- GİRİŞ HOLÜ	5.15 m <sup>2</sup>
5- WC	2.50 m <sup>2</sup>
6- MUTFAK	12.50 m <sup>2</sup>

TOPLAM NET : 65.35 m<sup>2</sup>

ZEMİN KAT PLANI



BRÜT KAT ALANI : 107.10 m<sup>2</sup>

MAHAL m<sup>2</sup>

1- BALKON	5.50 m <sup>2</sup>
2- YATAK ODASI	16.00 m <sup>2</sup>
3- BANYO	3.00 m <sup>2</sup>
4- YATAK ODASI	16.00 m <sup>2</sup>
5- BANYO	3.35 m <sup>2</sup>
6- BALKON	7.20 m <sup>2</sup>
7- HOL	9.00 m <sup>2</sup>
8- YATAK ODASI	18.00 m <sup>2</sup>
9- GİYİNME ODASI	4.30 m <sup>2</sup>
10- BANYO	4.00 m <sup>2</sup>

TOPLAM NET : 86.35 m<sup>2</sup>

1.KAT PLANI



Aegean  
window  
villas